

## Communities & Neighborhoods

*"To assure a satisfying community design through proper relationship of factors such as materials, scale, site, function, landscape and location."*

-Town Plan of Conservation & Development

## Housing

*"Diversification of housing accommodations for the many individual desires of our population"*

-Town Plan of Conservation & Development,

## Land Use & Open Space

*"Preservation and maintenance of the special natural features and resources of the Town for all generations"*

-Town Plan of Conservation & Development

## Water

*"Direct development away from fragile portions of our land environment; particularly the shore, wetlands and the natural flood plain."*

-Town Plan of Conservation & Development

## Economic Development

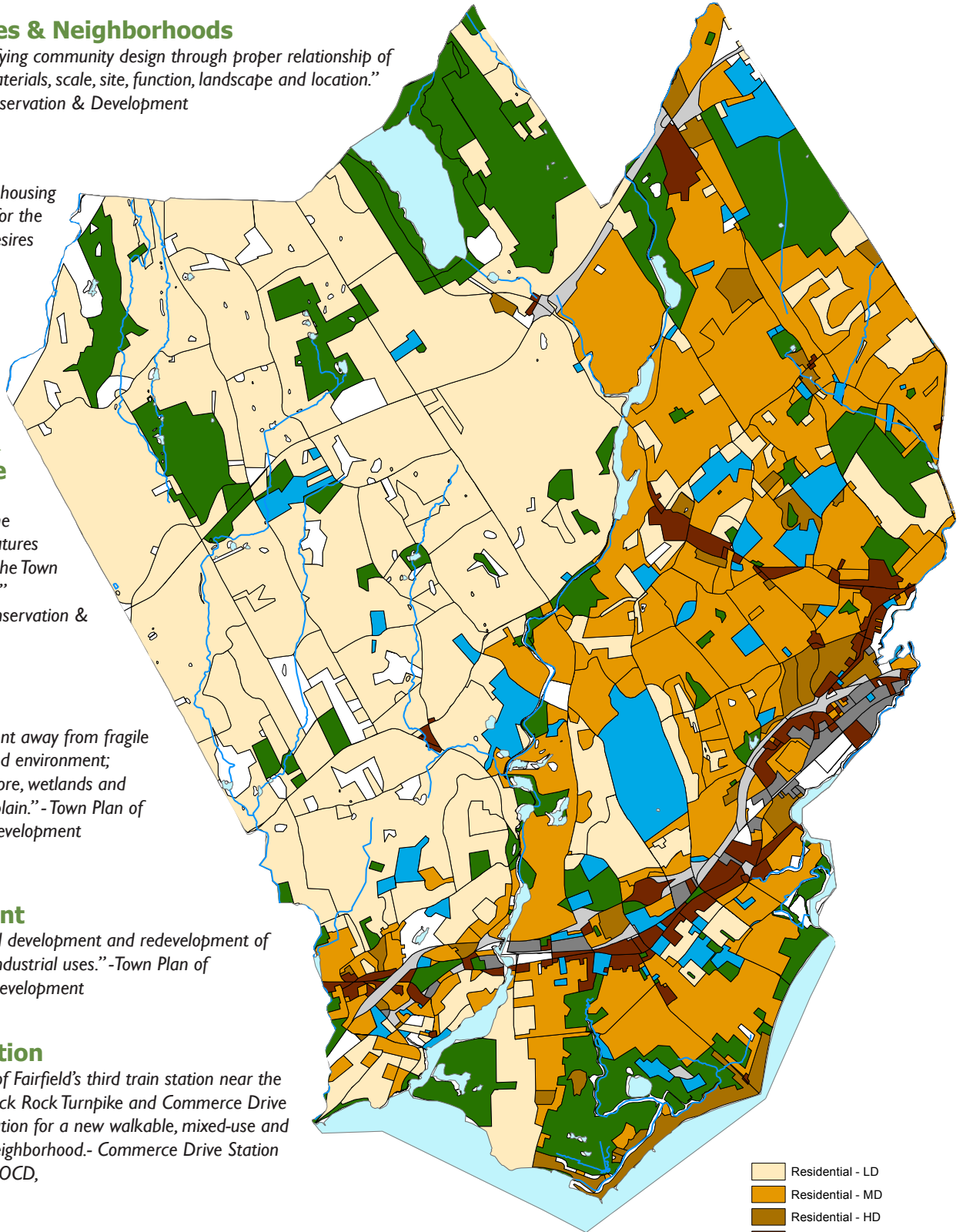
*"To seek balanced development and redevelopment of commercial and industrial uses."*

-Town Plan of Conservation & Development

## Transportation

*The construction of Fairfield's third train station near the intersection of Black Rock Turnpike and Commerce Drive will lay the foundation for a new walkable, mixed-use and transit-oriented neighborhood.*

- Commerce Drive Station Area Addition to POCD,



# Planning & Land Use in Fairfield, CT

(generalized land use map)

